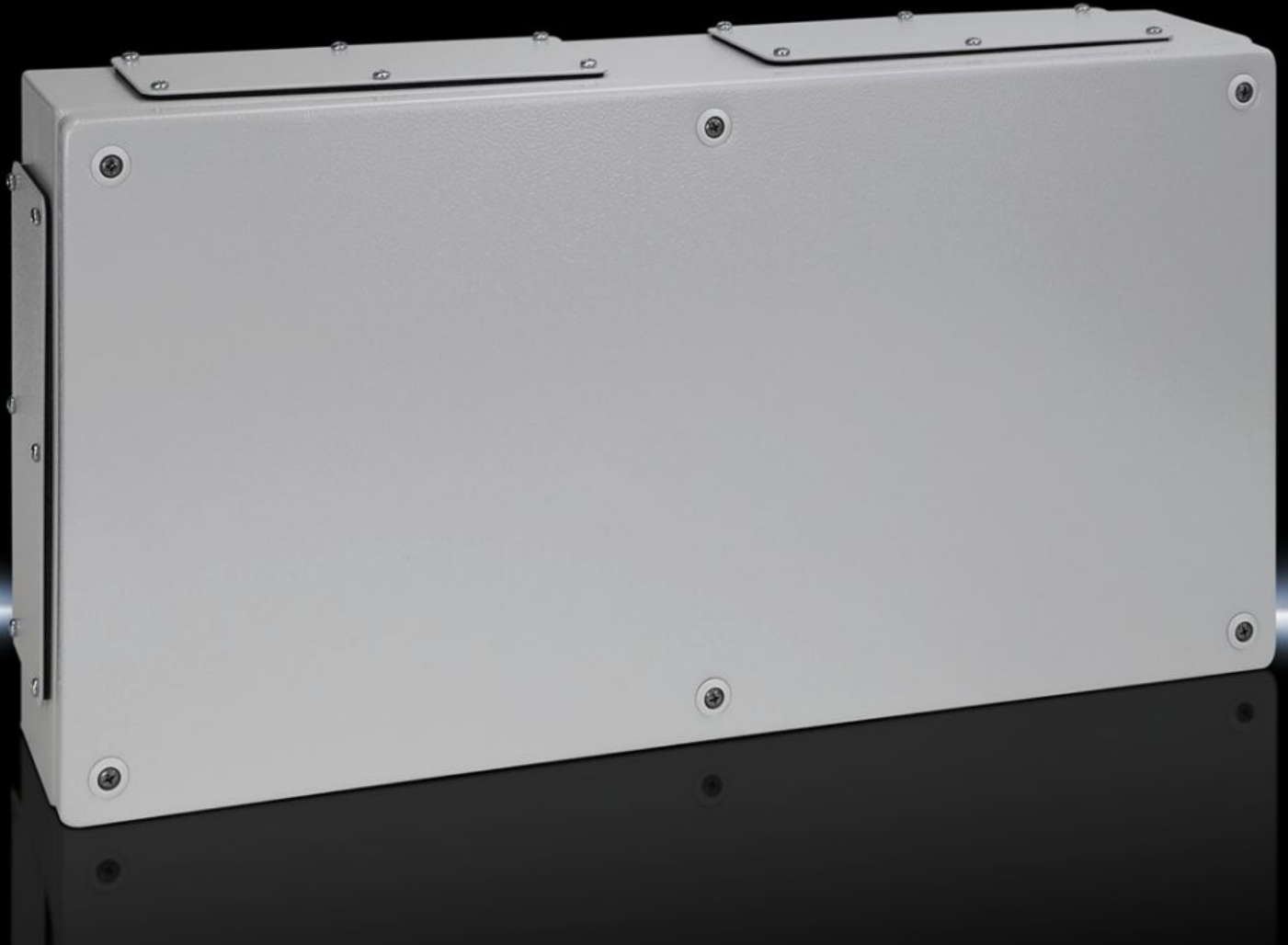


Rittal – The System.

Faster – better – everywhere.



KL 1538.510 Terminal boxes KL

State: 1/10/2024 (Source: rittal.com/au-en)

ENCLOSURES

POWER DISTRIBUTION

CLIMATE CONTROL

IT INFRASTRUCTURE

SOFTWARE & SERVICES

FRIEDHELM LOH GROUP



KL 1538.510 - Terminal boxes KL with gland plate

Spray-finished enclosure with sheet steel cover, with gland plate. Protection category IP 55.



Features

Model No.	KL 1538.510
Material	Enclosure: Sheet steel Cover: Sheet steel, all-round foamed-in PU seal
Surface finish	Enclosure and cover: Dipcoat primed, powder-coated on the outside, textured paint
Colour	RAL 7035
Supply includes	Enclosure with cover Quick-release fastener including plastic bushes Sheet steel gland plates with seals and assembly parts
Protection category NEMA	NEMA 12
Protection category to IEC 60 529	IP 55
IK Code	IK08
Dimensions	Width: 600 mm Height: 300 mm Depth: 120 mm
Material thickness - cover	1.25 mm
Material thickness - enclosure	1.38 mm
Gland plates	: 1 + 1 Size of gland plate for bus enclosures, position left/right: 2 : 2 + 2 Size of gland plate for bus enclosures, position top/bottom: 2

Features

Basic material	Sheet steel
Packs of	1 pc(s).
Weight/pack	7.7 kg
Net weight	7.192
Gross weight	7.57
Customs tariff number	73269098
EAN	4028177251595
E-Number Sweden	E3404694
ETIM 8	EC000261
ETIM 7.0	EC000261
ECLASS 8.0	27180101

Approvals

Approvals	Bureau Veritas DNV-GL Lloyds Register of Shipping UL + C-UL (listed)
Explanations	Declaration of conformity UK